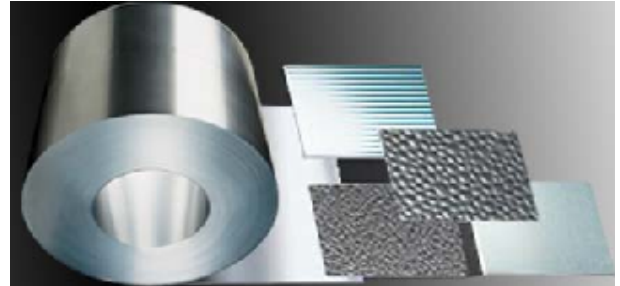


Application Note:

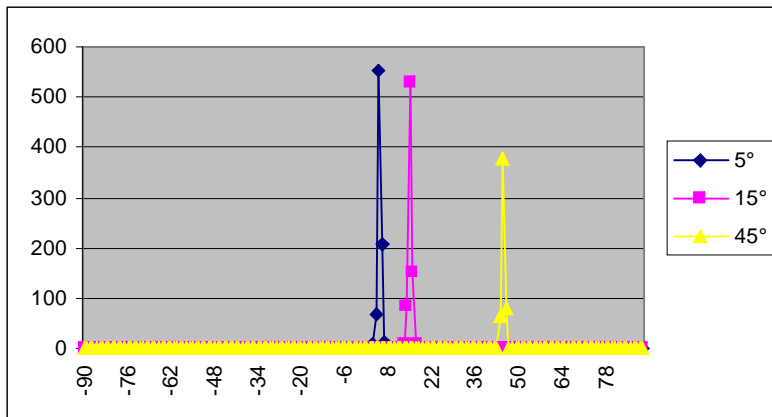
BRDF Measurements of Aluminium



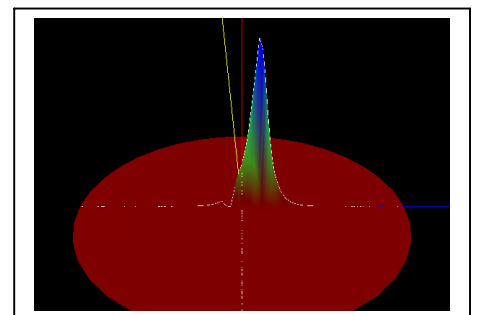
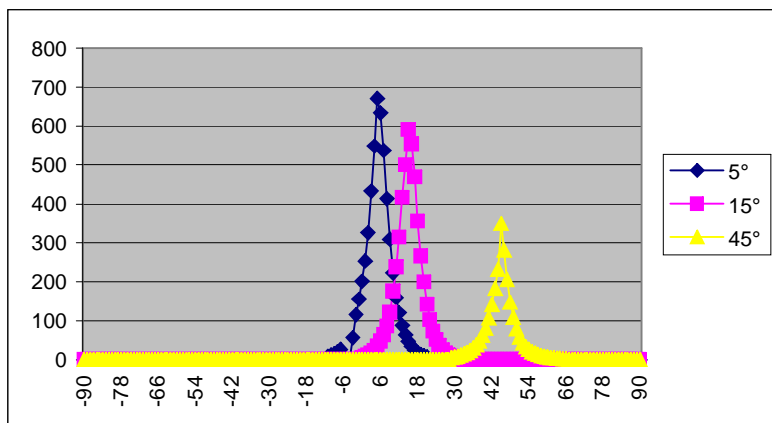
Aluminium sample

Aluminium plates, due to manufacturing processes, have scattering properties which are not the same, if the incident light hitting the aluminium is parallel or perpendicular to the thin grooves of the plate.

Measurement of Aluminium sample with incident light parallel to the grooves, at 3 different incident angles:



Measurement of the same Aluminium sample with incident light perpendicular to the grooves, at 3 different incident angles:



3d view

With the REFLET Bench, we can easily analyse differences, in the reflectance maximum peak and in the scattering angle, and see that the same material has different properties, depending on its position versus incident light. We could also analyse the effect of an incident light at 45° incident angle versus the grooves, or at any incident angle.